

## ALP Digital Series

### Liquid Level Switches

PRELIMINARY

#### FEATURES

- Solid state technology, no moving parts
- Polysulfone or Trogamid® housing
- High media compatibility
- Compact design
- High temperature devices available



#### MEDIA COMPATIBILITY

Tip and Housing: Polysulfone or Trogamid® <sup>1</sup>

#### SPECIFICATIONS

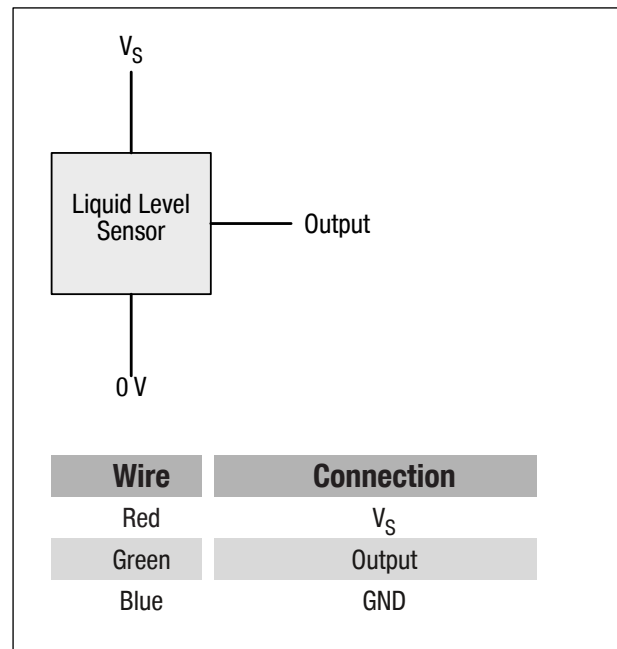
##### Maximum Ratings

Supply voltage 4.5...15.4 V<sub>DC</sub>  
Supply current @ V<sub>S</sub> = 15,4 V<sub>DC</sub> 2.5 mA

##### Temperature

Operating (Standard)	-25...+80 °C
Operating (Extended)	-40...+125 °C
Storage (Standard)	-30...+85 °C
Storage (Extended)	-40...+125 °C

#### ELECTRICAL CONNECTIONS



#### Notes:

- <sup>1</sup> Before use check that the fluid in which you wish to use these devices is compatible either with Polysulfone or Trogamid®. Some common fluids and compatibility can be found in All Sensors' Liquid Level Switches – Installation, Operation and Compatibility Guide. When using Trogamid® above +85°C some oil based liquids can cause deformation of the sensing tip, and must be tested for compatibility.

## ALP Digital Series

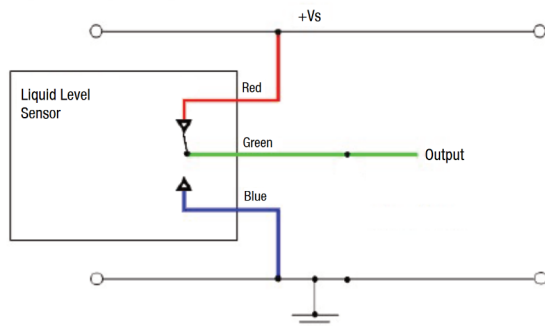
Liquid Level Switches

### OUTPUT CHARACTERISTICS

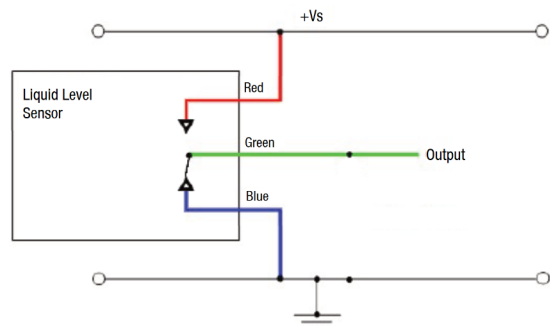
Characteristics	Min.	Typ.	Max.	Unit
Output High			$V_S - 1.5V$	V
Output Low			0V - 0.5V	V
Output Sink and source current		100		mA

### CIRCUIT DIAGRAMS

Digital Output High in Air

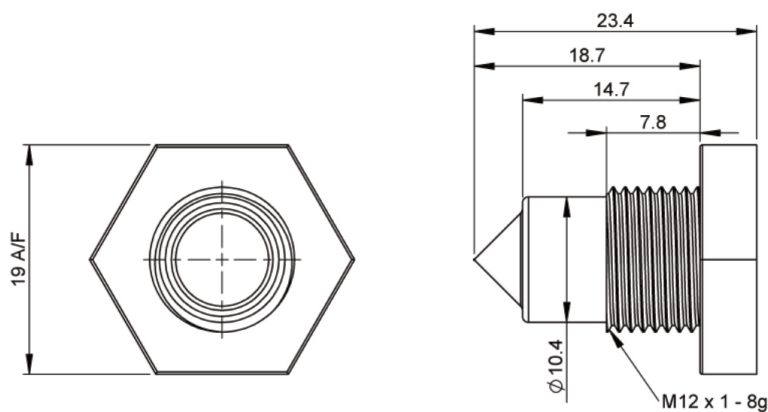


Digital Output Low in Air



### OUTLINE DRAWING

ALP-xBE... (M12x1, mounted externally)



Thread	M12x1-8g
Pressure	7 bar / 101 psi maximum (when correctly sealed)
Tightening Torque	1.5 Nm / 13.26 in-lbs maximum
Sensor Termination	24AWG, 250mm PVDF wires, 10mm tinned

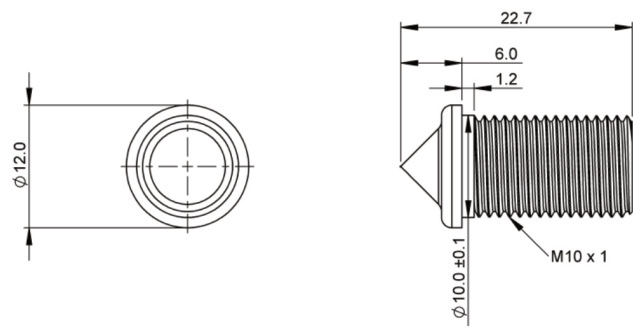
Dimension in mm

## ALP Digital Series

Liquid Level Switches

### OUTLINE DRAWING

ALP-xDW-... (M10x1, mounted internally)



Thread	M10x1
Pressure	20 bar / 209 psi maximum (when correctly sealed)
Tightening Torque	1.5 Nm / 13.26 in-lbs maximum
Sensor Termination	24AWG, 250mm PVDF wires, 10mm tinned

Dimension in mm

### ORDERING INFORMATION

Series	Housing Style		Temperature Range		Termination	Output Logic	
ALP-	PBE-	Polysulfone M12	S	-25 ... 85 °C	3- 3-wire output	H	High in Air
	PDW-	Polysulfone M10	E	-40 ... 125 °C		L	Low in Air
	TBE-	Trogamid M12					
	TDW-	Trogamid M10					

Order code example: ALP-PBE-S3-H